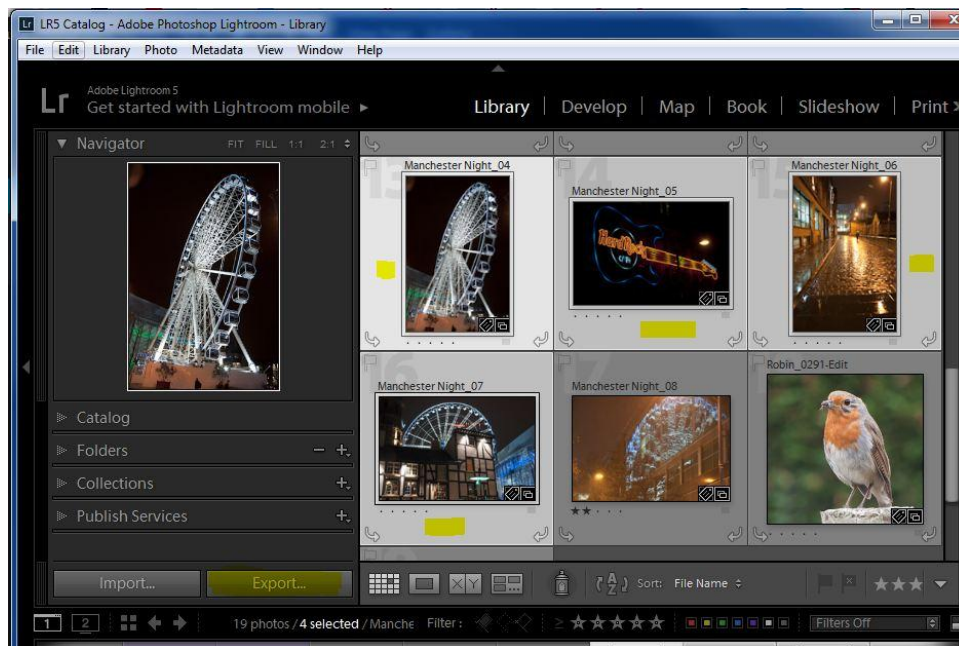


# Preparing images for PDI with Lightroom

---

Exporting competition images from Lightroom is very straightforward. After you have completed your first export you can save your settings as a 'User Preset' which will set up most of the parameters for your next PDI export

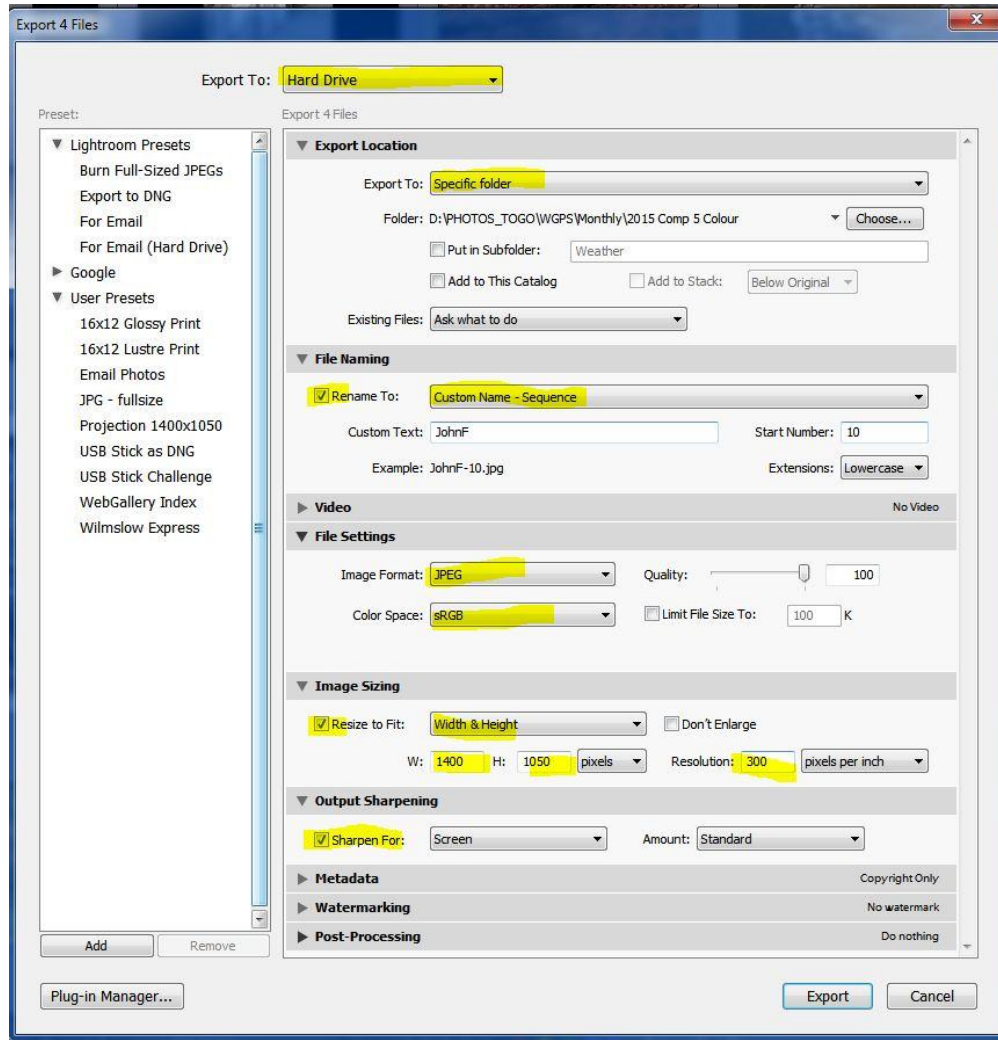
## 1. Select (highlight) images to export from the Library tab



.... Large image on next page ....

## 2. Click 'Export' to open the Export dialog

Select the Export Location, File Naming, File Settings and Image Sizing Options. Optionally apply Output Sharpening. You can export multiple images – and edit image titles in the File Manager. Or you can export single files with their final title (using Rename to: 'Custom Name'). Click Export and the images will be exported to your chosen folder.



## 3. Saving your settings as a preset

Click the *Add* button on the lower left. The *New Preset* dialog box opens. Give the Preset a name and click the *Create* button to save your new User Preset. Next time you need to create a PDI for competition click on your Preset and the dialog will be filled with the saved options.

